

Climate Session 4!

565

04-18-08

21:11

hotel

NM

alone

POCA —

POCD — TV show

SA: TV show

080418

56502L



A1 forward
up
loop back
down
forward
smooth

B1 space

A2 forward
slightly inclined
curve down
curve forward
straighten out
gritty

B2 (rolling land?)

A3 forward
slight incline
loop around
down

B3 (unknown)

081418

4

5

6



A4 forward.
 up
 loop back
 down
 forward
 smooth

B4 space

A5 incline
 curve
 down

gritty
 B5 (motion?)

A6 curve up
 forward
 curve down
 forward
 curve up
 smooth

B6 water

P2(space)

open
 blue
 brown
 sunny
 warm
 clear

P2 (rolling land)

brown

green

open

flat

clear

A1 I can see a long way
calming

P2 (unknown)

green

algae-like

diseased

underneath

moving

chemical

sc animals

sc change in chemical
make-up

P2 (motion)

sweeping

moving

flowing

gentle

stuck

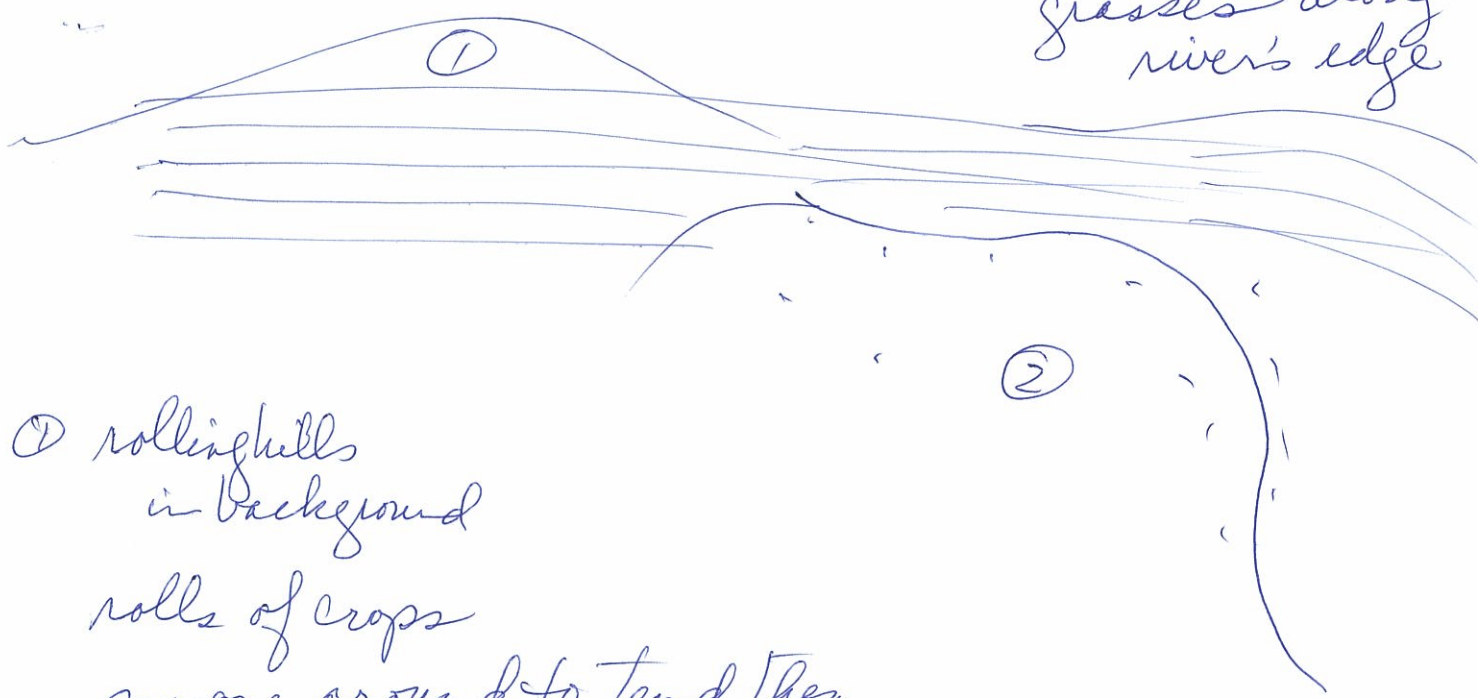
junked up

PE (water)
flowing
slow
sluggish

se Seems like a
bad place under
the surface,
calm + pretty
on the surface

gravelly

se cattails
grasses along
river's edge



① rolling hills
in background
rolls of crops
no one around to tend them

warm
sunny

② water
marshy edge
sluggish water

Summary

The target has elements of

- space
- rolling land
- motion
- water
- unknown

The space has aspects of

- open
- blue
- brown
- sunny
- warm

The land has aspects of

- rolling hills
- flat
- marshy
- crop-like rows
- algae
- chemical dusting

The motion has aspects of

- moving
- slowly
- gunked up

6

The water has aspects of

green

flowing

slowly

algae-like

insects

unclear

unsafe

The unknown has aspects of

Note: this was the water.

Other things I noticed:

outdoors

warm

sunny

looks pretty + calm

dangerous - chemical substance

End session: 21:46