

Anne Koide

@AnneM.Koide

crystal3dolphin@yahoo.com

HRV6 method

Session # 2

4/13 & 4/19/08

2:30pm 3pm Hawaii Time

F145-R3U7

F145-R3U7



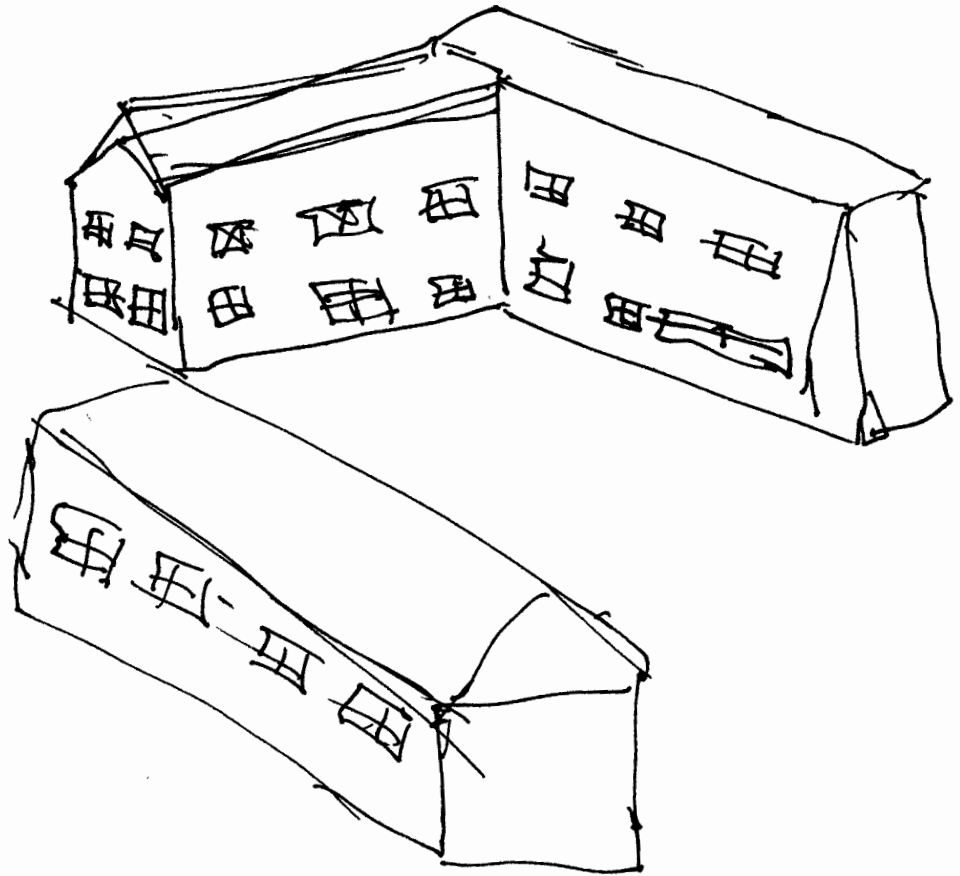
Metallic

STOOL

IDEOGRAM

F1Y5 - R3U7

F1Y5 - R3U7



STOP



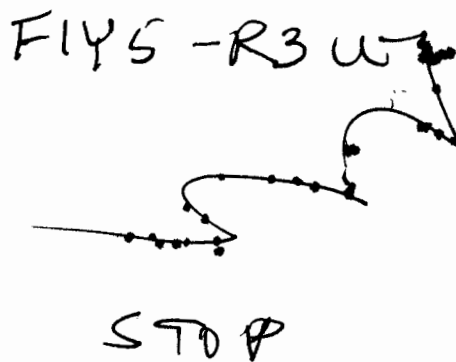
misty, cloudy (fog like)
 cold hazy
 damp

stop

- dark
 looks like night
 shades.

FIYS-R3U7

PL: Simplex
B: mushy
I: manmade
A: dynamic



PL: complex
B: soft
I: manmade
A: dynamic



PL: Simplex
B: semi-hard
I: manmade
A: static

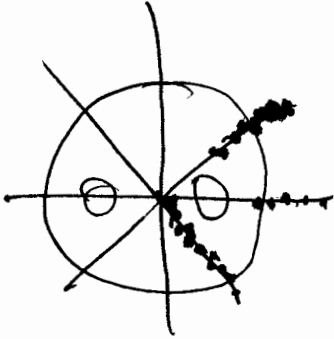


FIVE RUBY

1

	Sight	Sound	Taste/smell	Temp	Texture
Color brown		wind	rain like	cool	smooth
Brite: medium	 ship like	gravel like sounds	dry	warm	wooden
Focus 8 low		gusts of wind	sandy	cool to warm	sandy
			5 TO 10		

F1Y5 - R3U7



	Sight	Sound	Taste/Smell	Temp	Texture	P
Color red blue		Swishing rumming like coconut	Fishy	warm	rough sand -stone	land structure
Brite low		bells	dry wine	dry warm	creamy moist	object
Focus Low		sand	mud	warm	sandy open terrain	land
	looking down		stop			

S2 Phonics

A% apple apron appropriate anxious

E% easy ether either

I% ion isotope

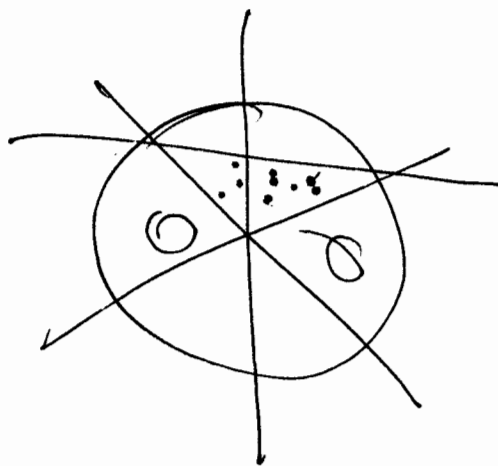
O% one obvious observations

U% union user

Free Space 9

Forest Gump

Frozen fun



STOP

Cauller's Plus
Fenwick



dry barn

dry bed

abandoned

CASCADE

LAND \perp AIR \rightarrow WATER \rightarrow

STRUCTURE \perp ENERGY \rightarrow Obstacle \rightarrow

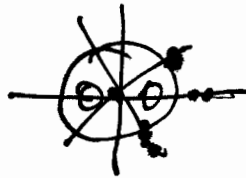
Life: Vegetation \perp

Life: Humans \perp

Life: other \rightarrow

BLACKBOARD

LAND

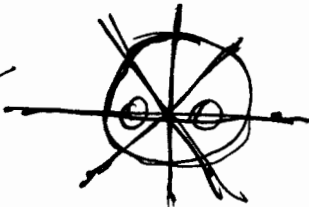


birds
sweet some
fresh warm

STOP

BLACKBOARD

greens
broad leaves
am



Humans
vegetation - not as
edible
warm

STOP

BLACKBOARD

STRUCTURE



bridges,
low buildings
warm

STOP

BLACKBOARD

LAND

tropical

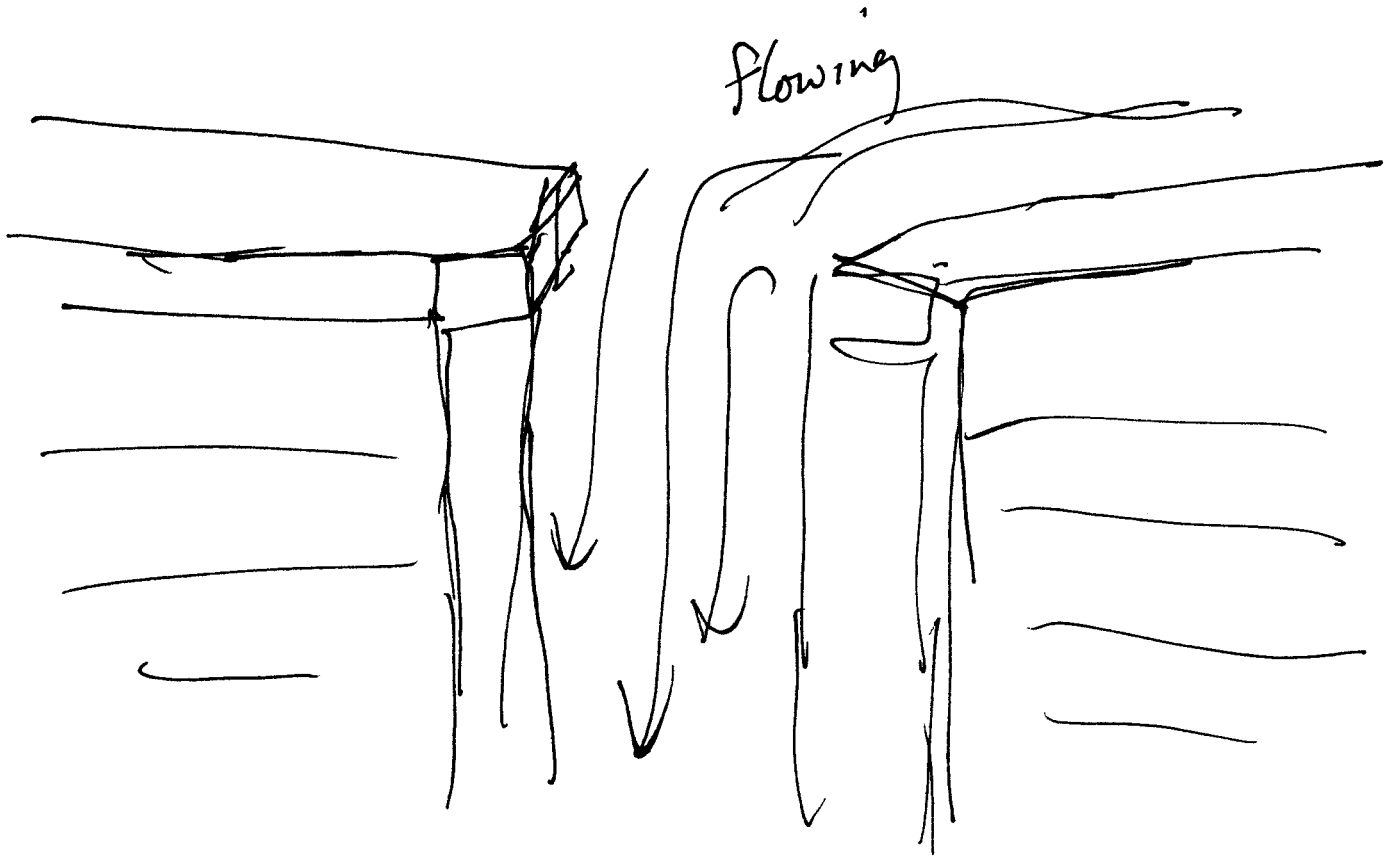
forested

South America like

fish
ostrich like

STOP

BLACKBOARD #2 Humans



STOP

BLACKBOARD

Humans

forested
few humans on the move
water falls-like places
mountains
valleys

STOP