

page: 1

Stage: 1

Dr. 17.5.09.

2.45pm.

CRU.

BLIND.

TARGET: TARGETS - MULTI UNIT.

I: A LITTLE STRESSED, 20 MIN COOLDOWN TO MUSIC.



a.) A: ACROSS, DOWN, ACROSS, DOWN, ACROSS.  
SOLID.

B: STRUCTURES.

S2: HARD, EDGED, WARM, FLAT, WIDE, DRY.

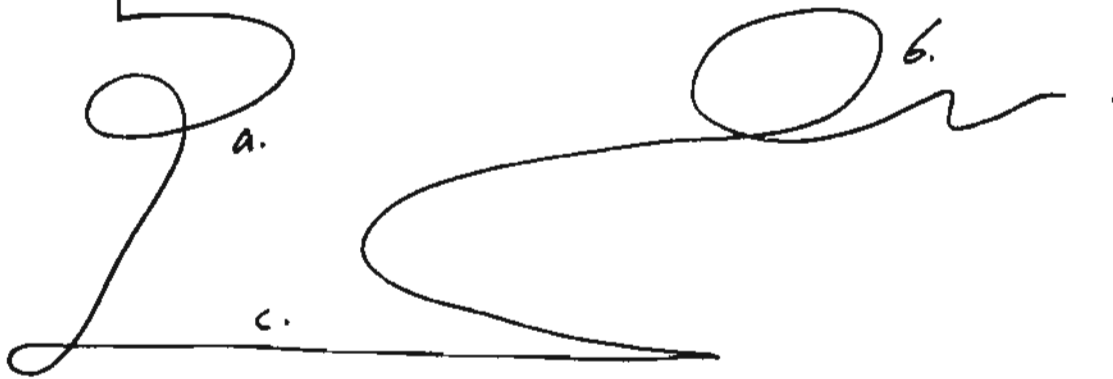
b.) A: LOOPING, ACROSS.  
SOFT.

B: EXPRESSION.

S2: WILD, EMOTIONAL, CHARGED, THICK, APPALING.

ASL  
WHERE  
AND  
DEATH.

Trajectory



- a.) A: loop, down, loop.  
 SORT.  
 B: Like .

S2: many, busy, packed, solitary, expression.

ADL  
PATIN

- b.) A: curve up, loop, up and down.  
 SORT.  
 B: EMOTIONAL .

S2: WAVE LIKE, EXPRESSION, OUTPOURING, HIGH EMOTIONS.  
 CRYING, GREAT EMOTIONS .

- c.) A: DENOS.  
 ITAO.  
 B: LAND

S2: DRY, YELLOW, CHALKY, RUGGED, PASTRY.

ADL  
ISRAEL .

Intensity



a.) LIFE.

more than one.

CHARACTER, ENERGETIC, VOLTA, EMOTIONAL.

b.) Emotion.

Rising, connected, bridging / expresses / dis-connected.

Ad  
canal.

page: 4.

Stage: 2

Daz.

As  
Craw.

A: VOICES. CRYING, LOUD, NOISY. MIXED, HEAVY.

T1: HARD DRY, RUGH.

T2: WARM. HOT.

V-

COLORS: WHITE, YELLOW, BLUE, RED.

Lim: BRIGHT

Can: HIGH - V-HIGH

T3: ENERGY. BITTER. CLAY.

Q: SULPHUROUS, SMOKE.

As  
GUNSMOKE.

Es: WILD, EMOTIONAL, WHITE. (SWEETISH).

SUB: LOOKING DOWN - MANY. - AN OUTCOME.

As  
CONFLICT.

D-

H.  MESSY.

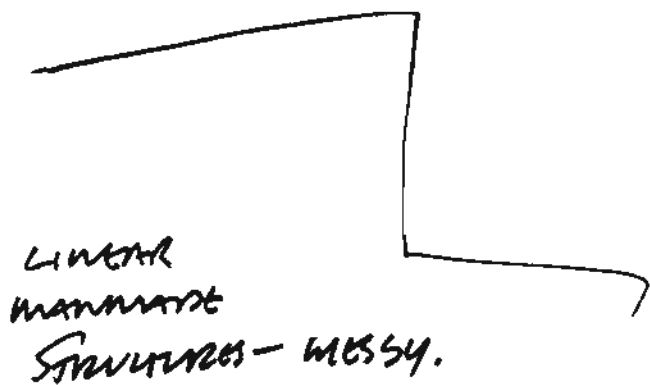
V.  BROKEN.

D: NONE.

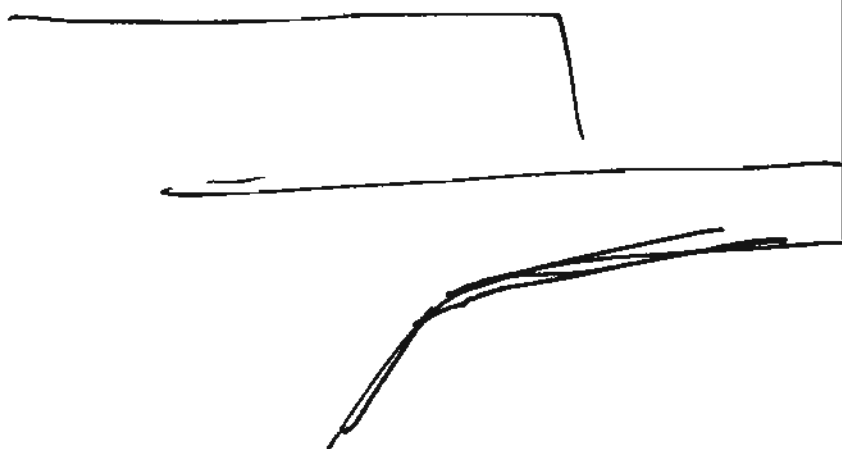
MO SU: SCRAWL. MIXED, SHAPES/SIZES. BROKEN:

AE: FEELS EMOTIVE. STRONG.

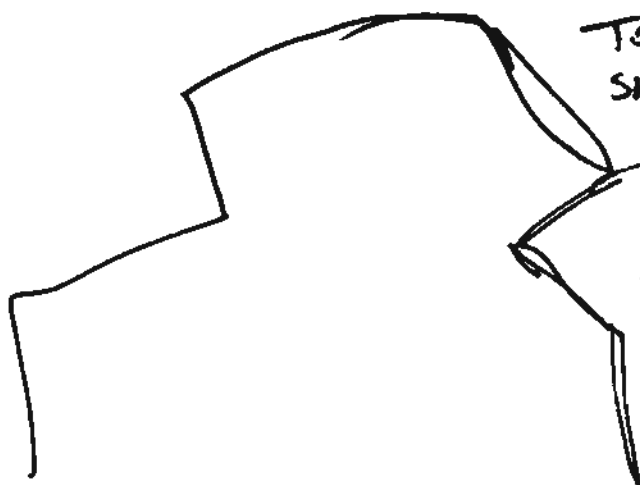
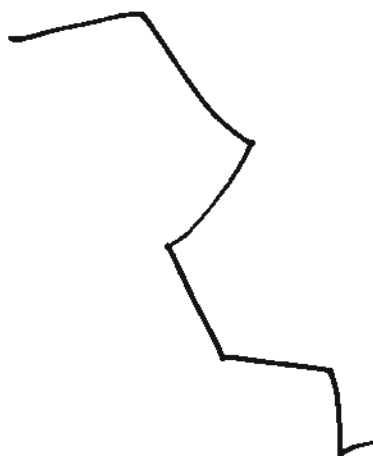
TARGET 4



LINEAR  
MANUFACTURE  
STRUCTURES - MESSY.



STRUCTURES  
BROKEN.  
ABANDONED.



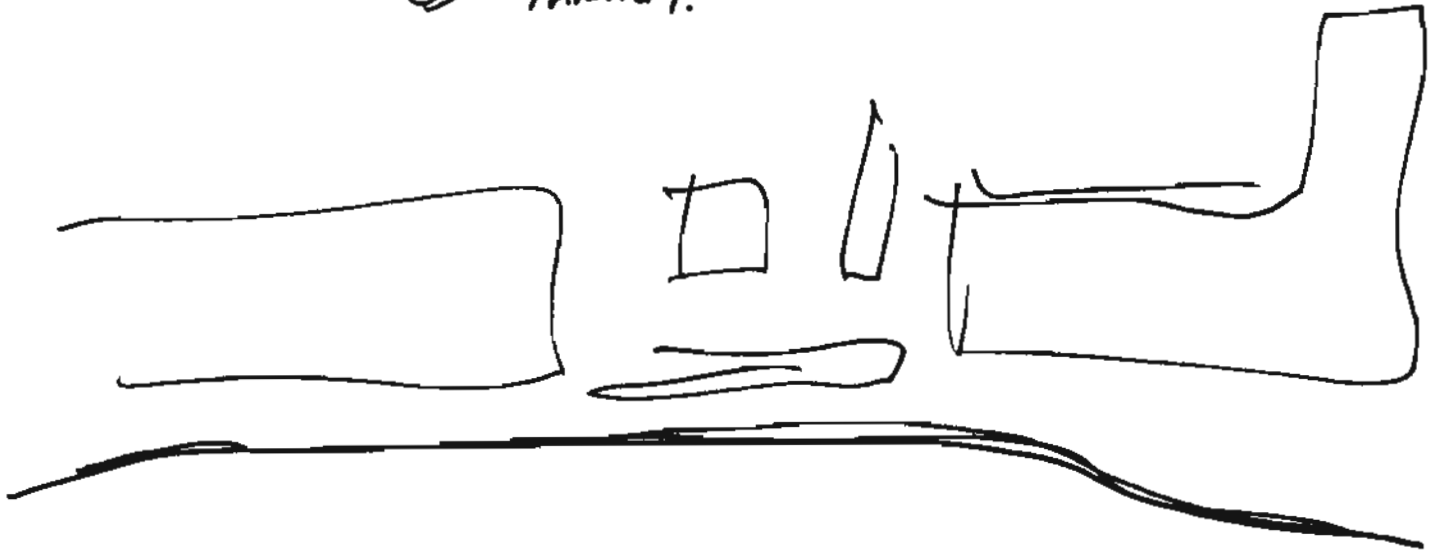
TORN  
SHREDDED  
BROKEN  
RUBBLE.

page: 6.

Stage: 5

DAZ.

MOVE ABOVE THE TRIBUTARY TO AN OPTIMUM LOCATION - SKETCH/DESCRIBE IN FULL DETAIL:



BREAK-SEPARATOR.  
(WATER?).



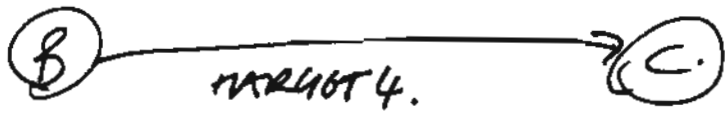
BROKEN STRUCTURES.

page: 7.

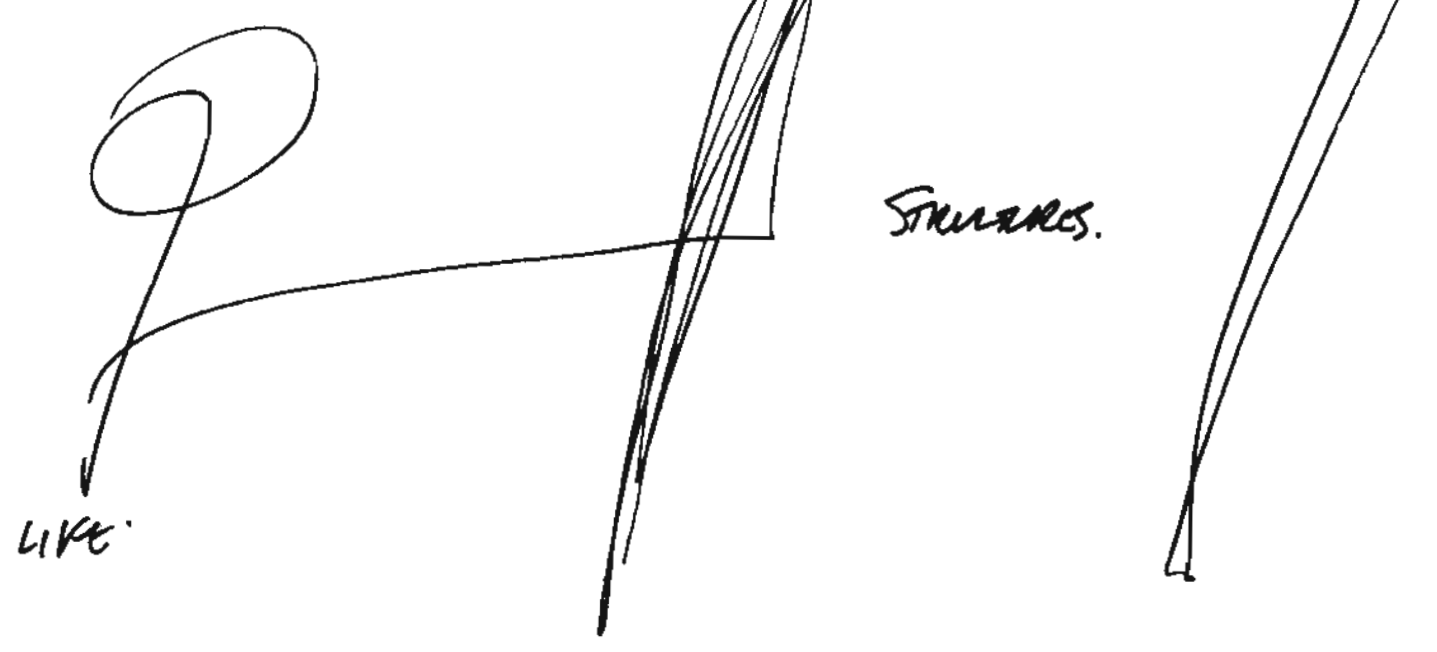
Stage: 3

DAL.

MOVE TO THE 'TASKING' - DESCRIBE/SKETCH IN FULL DETAIL:



ANGER  
SURPRISE  
ENVY



SB<sup>1/2</sup>: FEELS LIKE LIFE IS ANGRY + EMOTIONAL OVER DAMAGE + PAIN - THIS FEELS LIKE A DISCREPANCY BETWEEN 2 PARTS - AN INNOCENT SET OF PEOPLE WHO'S LIVES ARE IMPACTED / AFFECTED - FEELS VIOLENT / CHANGE.

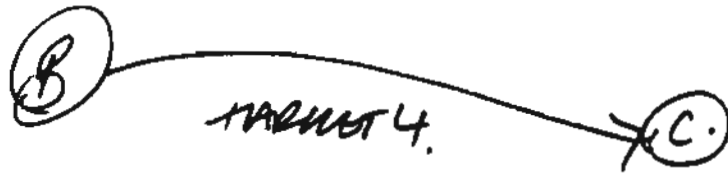
THE LOCATION FEELS, SUNNY / HOT / DRY.

Page: 8.

Stage: 3

DAR.

MOVE TO - SKETCH/DESCRIBE THE 'NEW' EVENT - IN DETAIL:



APL  
BOMBED.  
CITY.

53 $\frac{1}{2}$ : THIS FEELS LIKE A MASS OF PEOPLE.  
THEY FEEL ATTACKED, AND ARE HURTING/EMOTIONAL.  
THIS THEY ARE EXPRESSING.  
A FEEL OF INNOCENT/UNPROVOKED/SURPRISE TO THIS  
A SENSE OF PAIN, LOSS, DESTRUCTION TO LIVES + THINGS.

APL  
ISRAEL/  
PALESTINE

3.48pm  
END. 😊 DAR.



# Target: Target4

---

**Viewer:** Daz Smith

**Method:** CRV

**Information:** Blind

**Date:** May 17, 2009

---

## **The target feels like:**

Land, Life, Structures, emotions

### **The land is;**

Dry, yellow, chalky, hot.

Rugged, patchy.

In contention.

A spacious area in between two structured areas.

The location feels very hot and sunny.

### **The Structures are;**

Manmade, Hard edged, warm, flat, dry.

There are two areas of structures separated by a space/distance which could be water.

The structures feel messy, broken, torn, and shredded, like rubble.

Abandoned in places.

### **The life is;**

More than one.

Solidarity. A consensus of opinion.

Angry and emotional, high emotional from a group of people.

wave like expression of emotion, an outpouring, crying, very emotive.

A sense of loss, pain and maybe even death.

A charged, rising emotion that builds as it outpours.

This feels like a conflict, a surprise event like an attack.

Feels like innocent people affected by a surprise event causing great emotional distress.